

REVATHI ELECTRONICS & CONTROLS

ITEM NO. : 4

**ITEM : TOP MOUNTED DISPLACER TYPE LEVEL SWITCH WITH GUIDE PIPE:
REFER OUR GENERAL ARRANGEMENT DRG. NO. RTMDLS-1001-WP.**

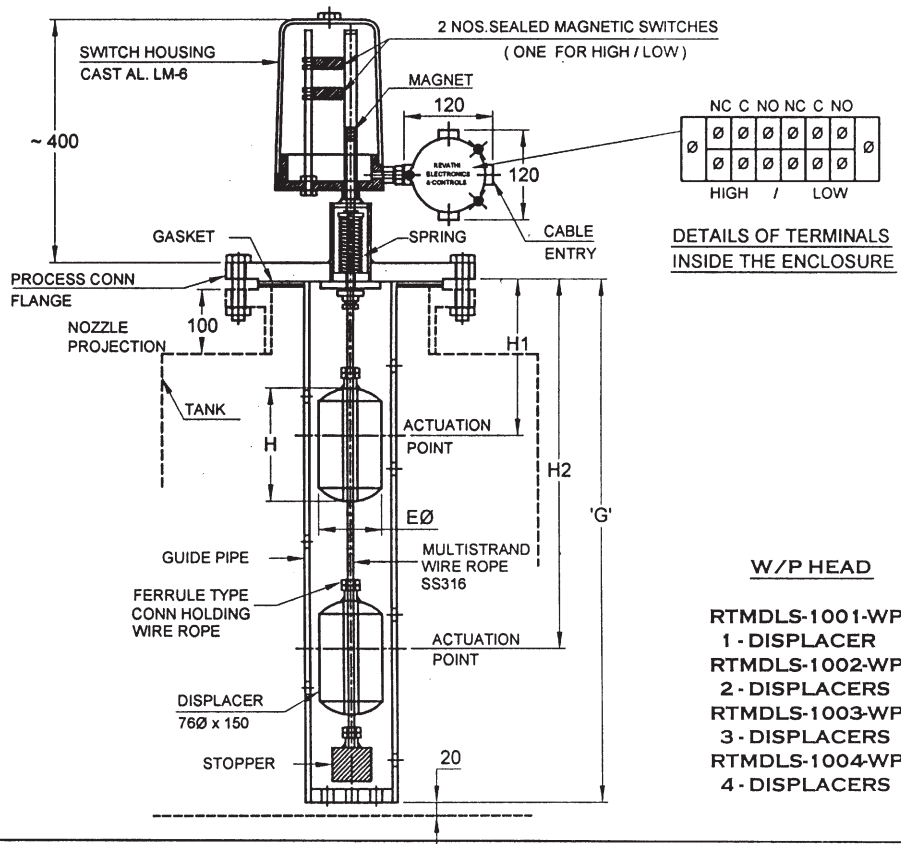
PRINCIPLE OF OPERATION :

Operation is based upon a buoyancy principle whereby a spring is loaded with weighted displacers which are heavier than the liquid under control. Immersion of the displacer in the liquid results in a buoyancy force change, producing a spring load reduction which moves the spring thereby actuating the magnetic switch which is kept inside the stem.

MATERIAL SPECIFICATION :

- | | | |
|---|---|--|
| 1. Service | : | To Mention |
| 2. Op Press $\text{kg/Cm}^2\text{g}$ / Temp ° C / Sp. Gr. | : | To Mention |
| 3. All wetted parts matl. | : | SS/PP/PVC/HDPE/PVDF/PTFE etc. |
| 4. No. Of Displacer | : | 1 / 2 / 3 / 4 Nos. (HIHI, HI, LO & LOLO) |
| 5. MOC of Spring | : | SS316 / Inconel / Monel / SS sleeved with PTFE |
| 6. MOC Multistrand wire rope | : | SS316 / PP/ SS sleeved with PTFE |
| 7. Mounting Flange | : | 4" ANSI 150# RF B 16.5 (OR) To Mention |
| 8. Connection Head | : | Cast Aluminium Weatherproof or Flameproof |
| 9. Cable Entry | : | ¾" ET (F) STD |
| 10. Switch Differential | : | 60 - 80 mm Approx |
| 11. Guide Pipe perforated | : | Will be supplied as per the request. Recommended above 5 Mtrs. |

TOP MOUNTED DISPLACER TYPE WEATHERPROOF LEVEL SWITCH



TOP MOUNTED DISPLACER TYPE FLAMERPROOF LEVEL SWITCH

